

MONTHLY MEMBERSHIP PROGRESS REPORT

LOCATION TEXAS

District 2 T2

Results as of: 5/31/2023

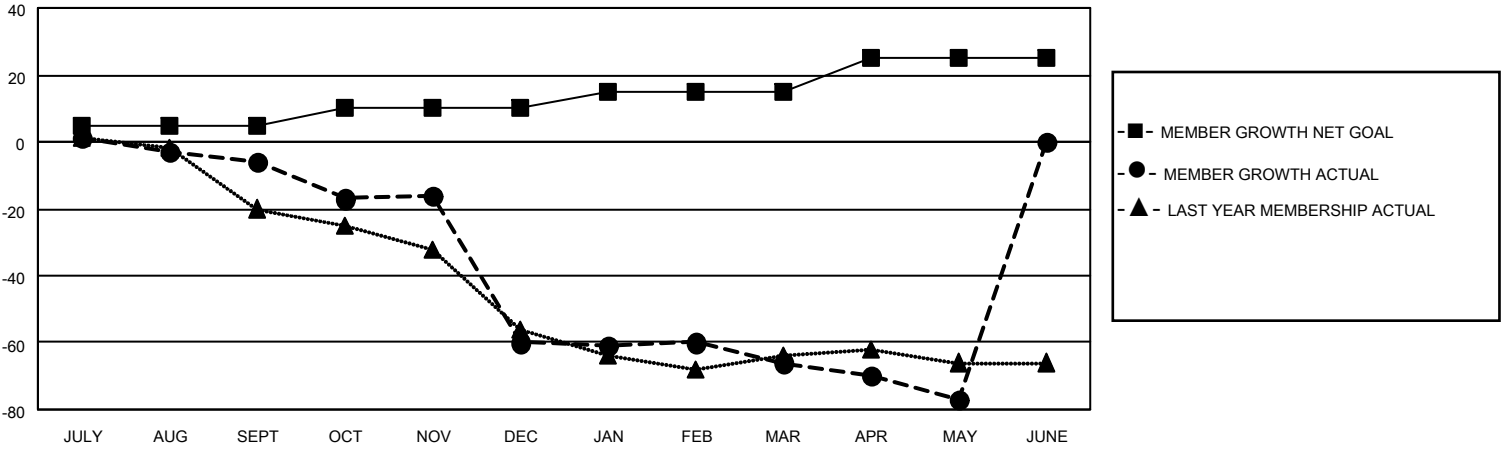
Clubs			
RESULTS FOR 2022-2023			
QUARTER	NEW CLUB GOAL	NEW CLUBS	DROPPED CLUBS
JULY/AUG/SEPT	0	0	0
OCT/NOV/DEC	0	0	2
JAN/FEB/MAR	0	0	1
APR/MAY/JUNE	1	0	0

Members			
RESULTS FOR 2022-2023			
QUARTER	MEMBER GROWTH NET GOAL	MEMBER GROWTH ACTUAL	DROPPED MEMBERS ACTUAL (including transfers)
JULY/AUG/SEPT	5	27	31
OCT/NOV/DEC	5	17	68
JAN/FEB/MAR	5	26	31
APR/MAY/JUNE	10	15	23

GOALS AND ACTUAL NEW CLUBS CUMULATIVE



GOALS AND ACTUAL MEMBERS CUMULATIVE



DROPPED CLUBS: 3

20 CLUBS OF 35 ADDED 1 OR MORE NEW MEMBERS

GENDER DISTRIBUTION

MALE	703 (72.25%)
FEMALE	269 (27.65%)
NON BINARY	0 (0.00%)
PREFER NOT TO ANSWER	1 (0.10%)

DROPPED MEMBERS

[CLICK HERE FOR CUMULATIVE MEMBERSHIP DATA](#)

DECEASED	9
CLUB CANCELLED	37
OTHER	107
TOTAL	153

TOTAL FAMILY UNIT MEMBERS	101
FAMILY MEMBERS PAYING HALF DUES	51